

## **Appendix A – Additional Figures Northern Great Basin Ecoregion**

---

## Appendix A - Additional Figures List

Figure A-1. Predicted Spring Change in Maximum Daily Temperature .....	A-1
Figure A-2. Predicted Summer Change in Maximum Daily Temperature .....	A-2
Figure A-3. Predicted Fall Change in Maximum Daily Temperature.....	A-3
Figure A-4. Predicted Winter Change in Maximum Daily Temperature.....	A-4
Figure A-5. Predicted Spring Change in Precipitation.....	A-5
Figure A-6. Predicted Summer Change in Precipitation.....	A-6
Figure A-7. Predicted Fall Change in Precipitation .....	A-7
Figure A-8. Predicted Winter Change in Precipitation .....	A-8

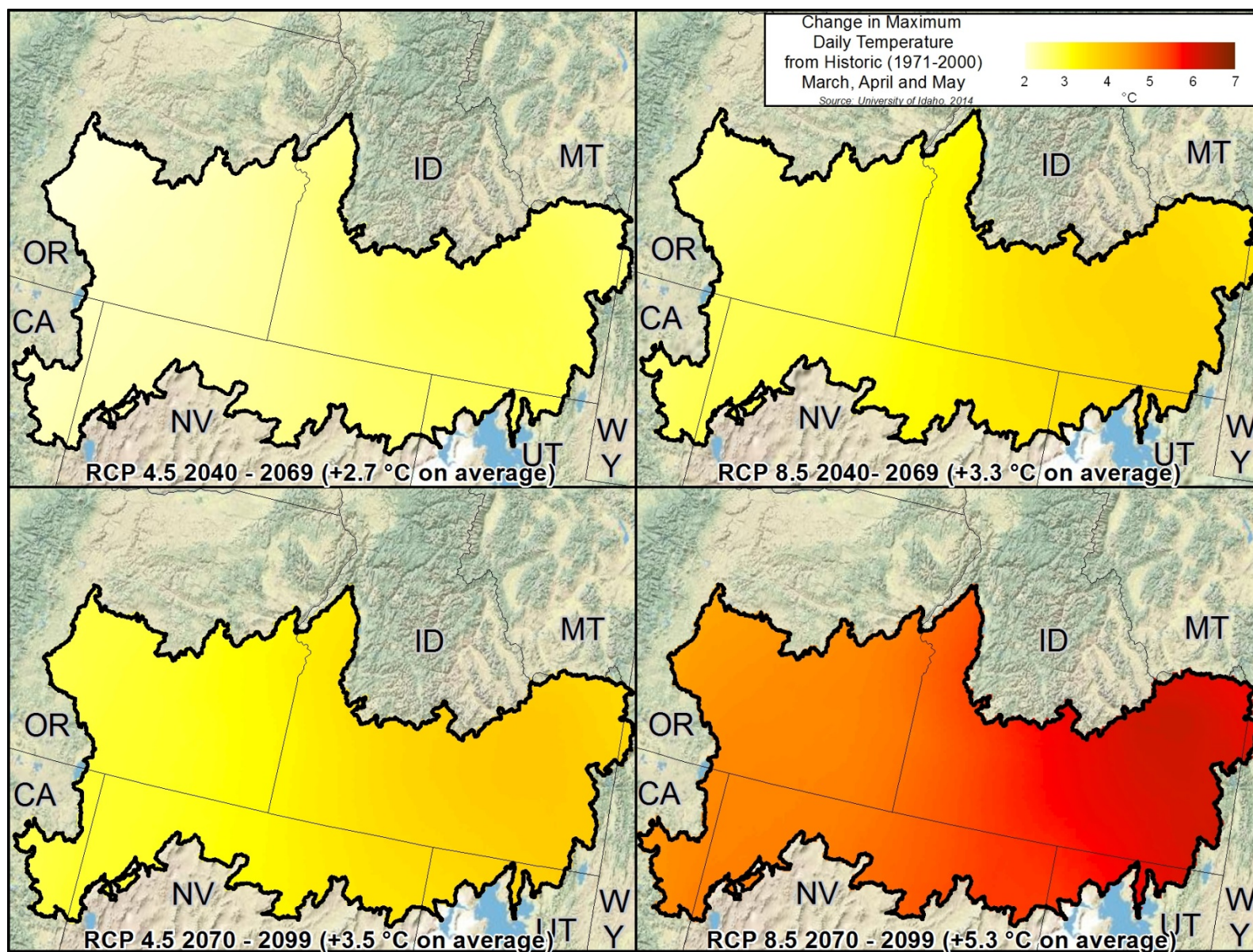


Figure A-1. Predicted Spring Change in Maximum Daily Temperature



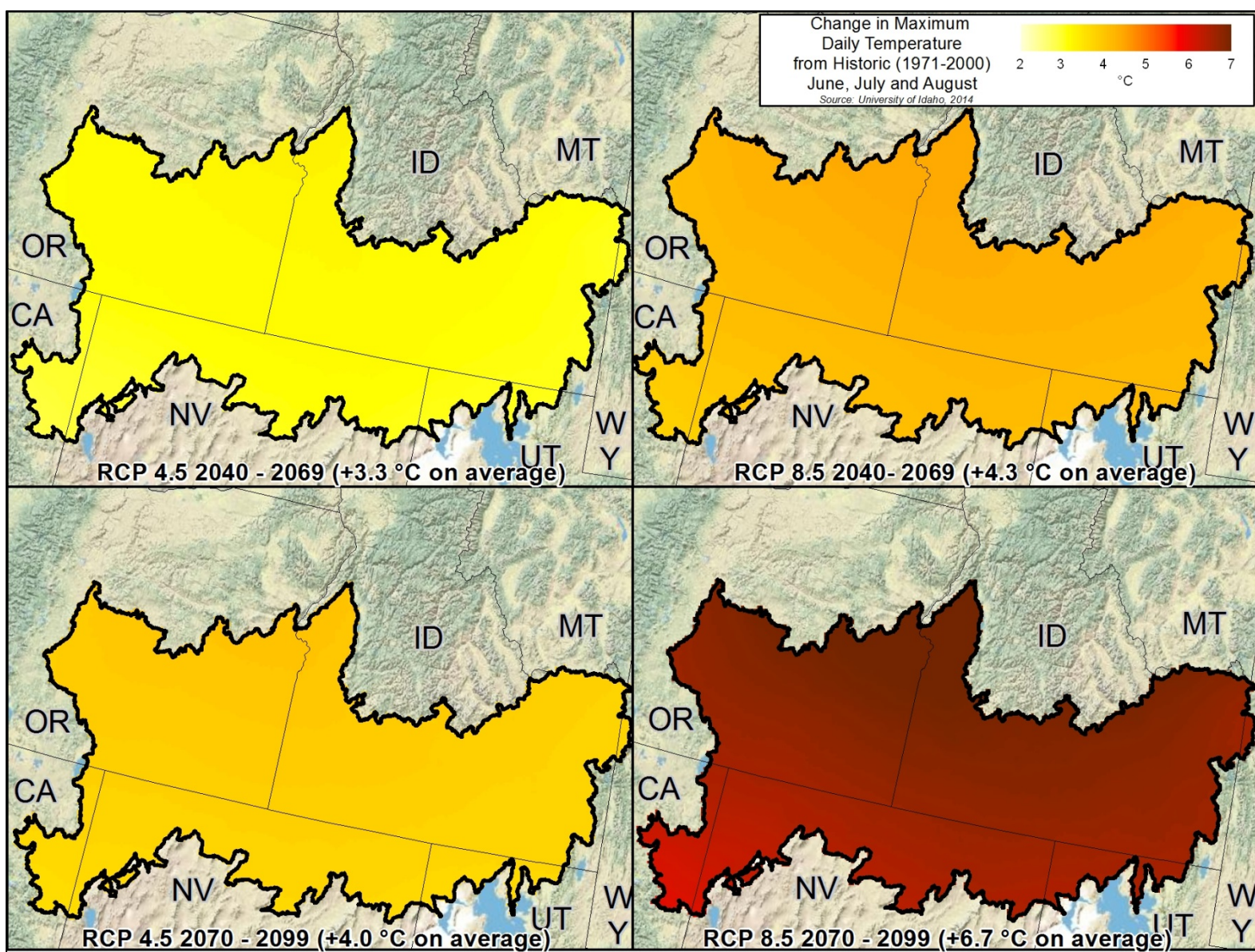


Figure A-2. Predicted Summer Change in Maximum Daily Temperature



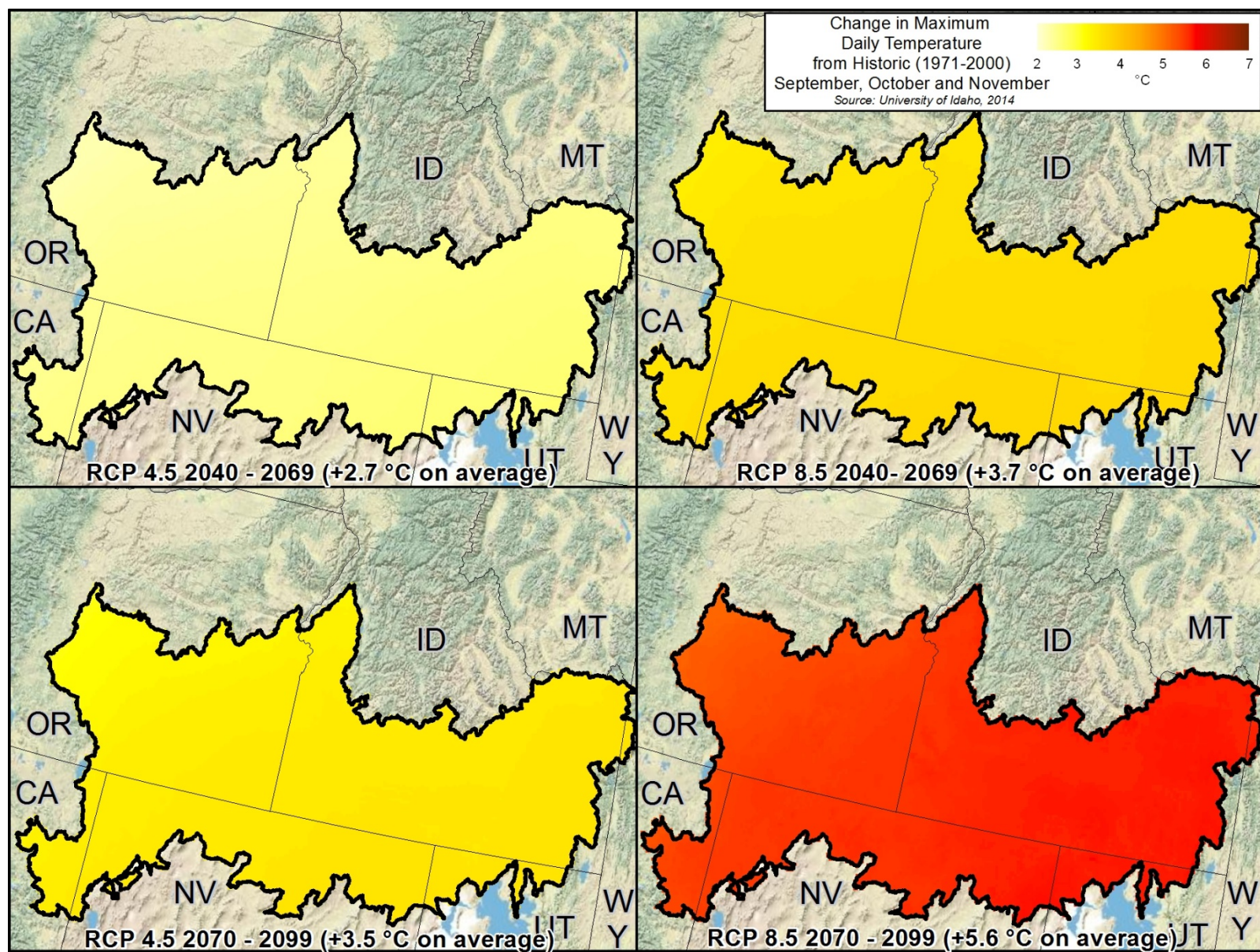


Figure A-3. Predicted Fall Change in Maximum Daily Temperature



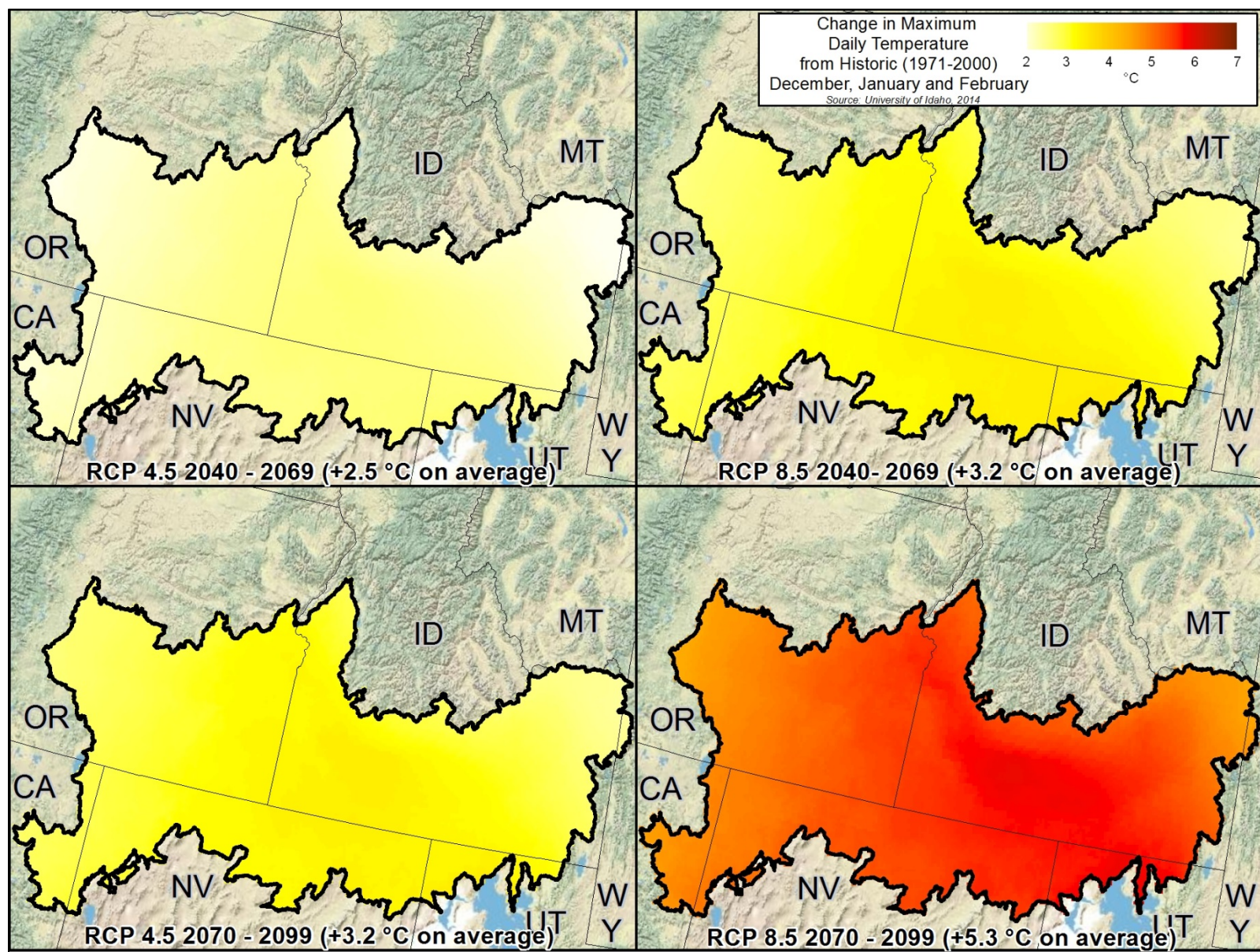


Figure A-4. Predicted Winter Change in Maximum Daily Temperature



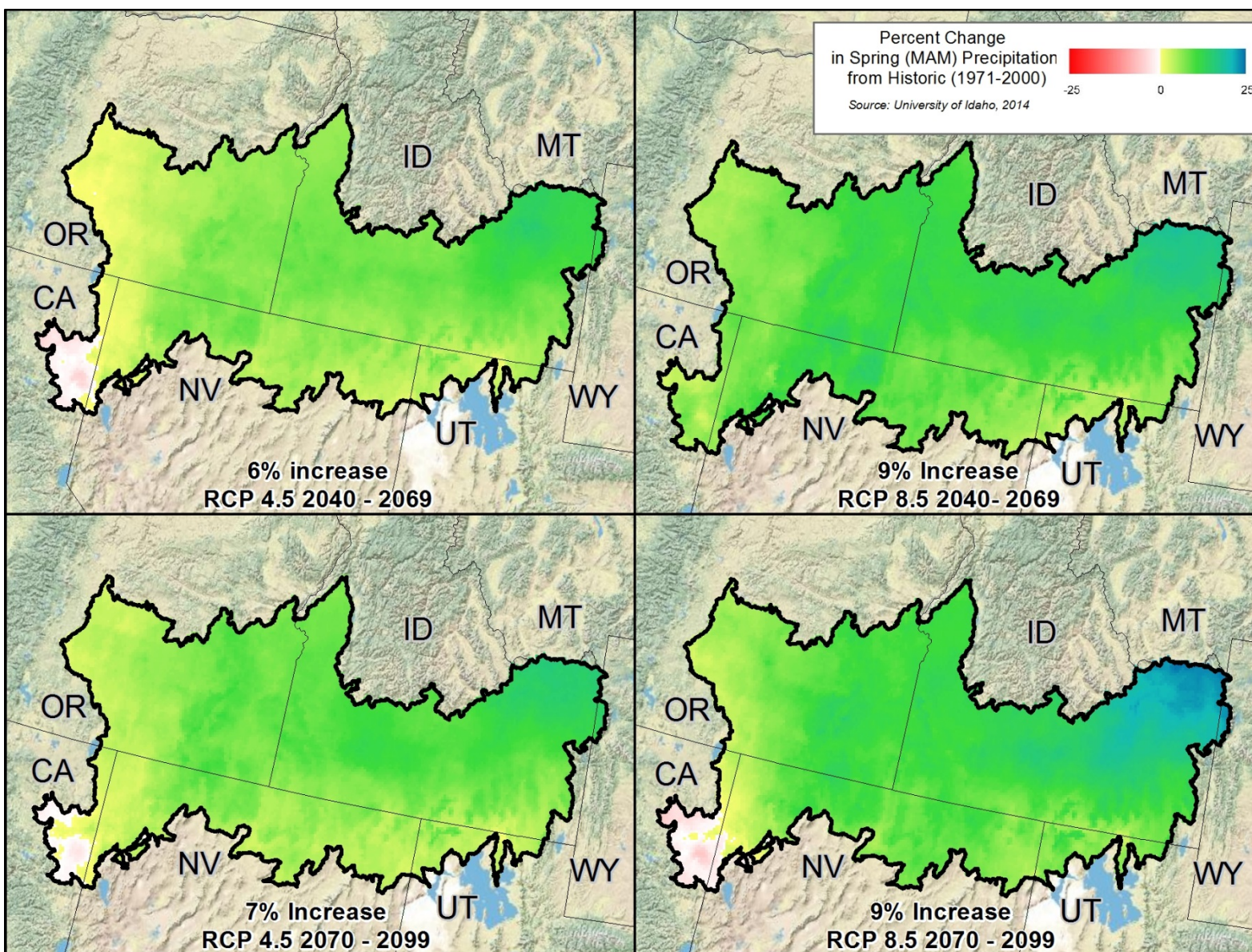


Figure A-5. Predicted Spring Change in Precipitation



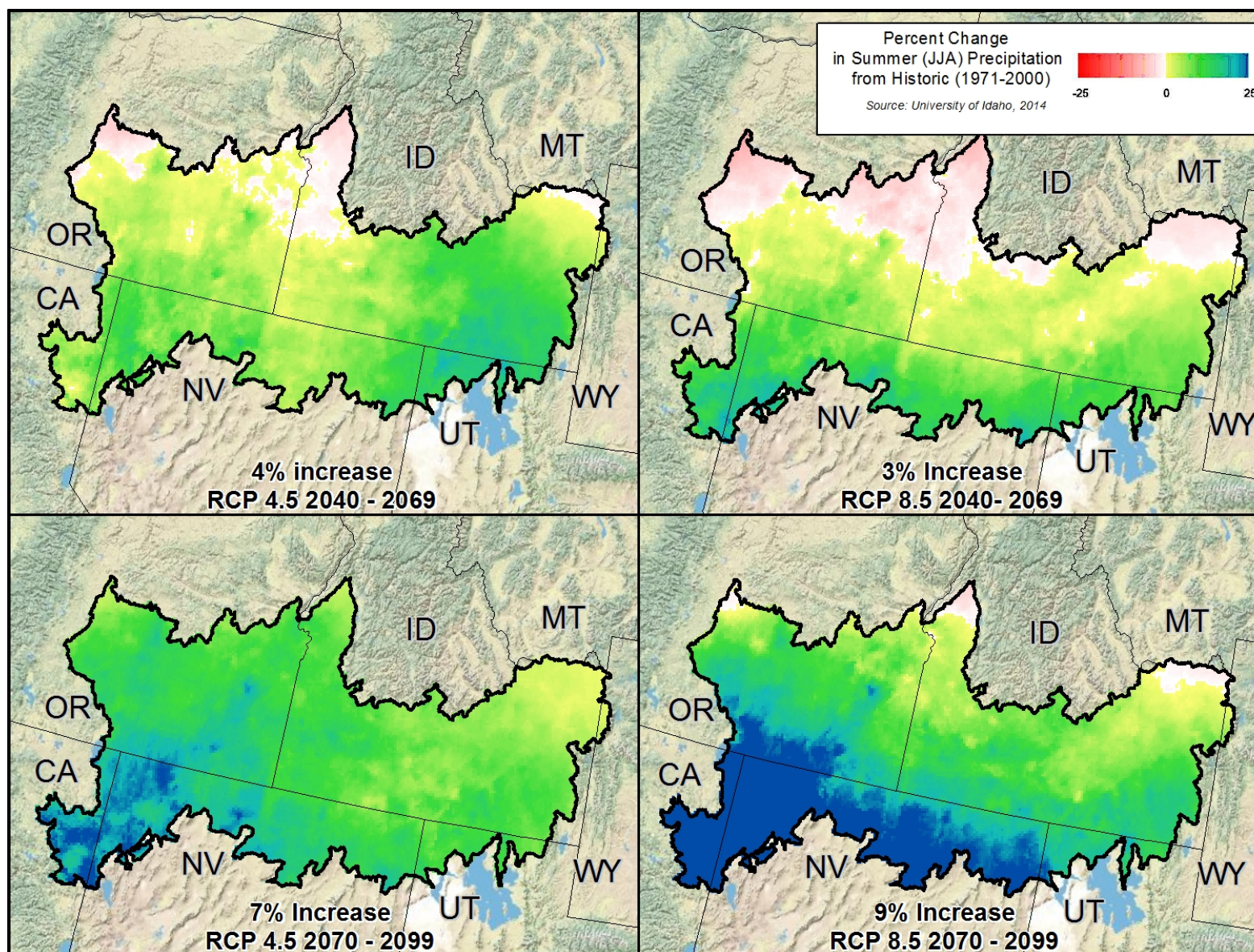


Figure A-6. Predicted Summer Change in Precipitation



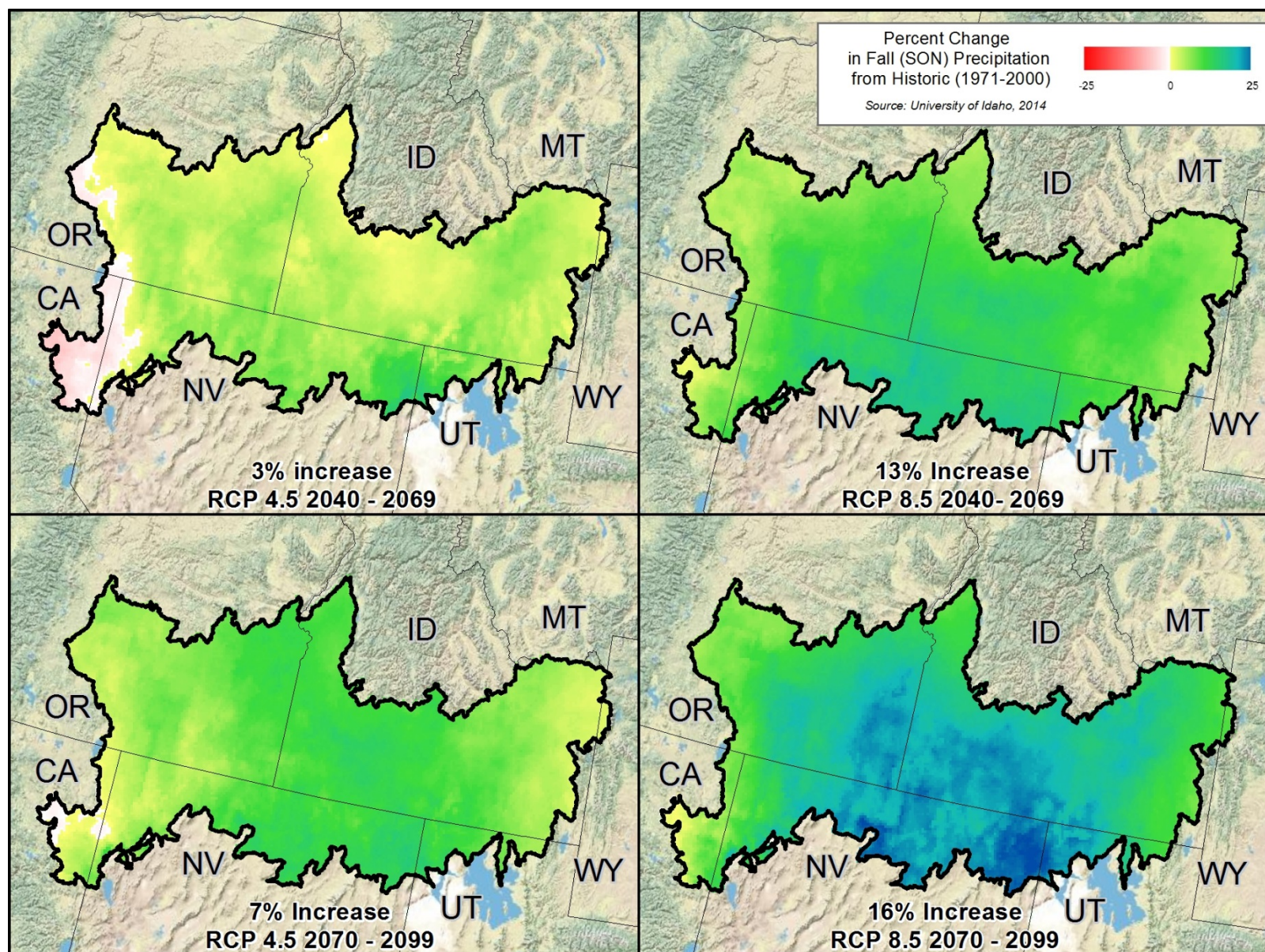


Figure A-7. Predicted Fall Change in Precipitation



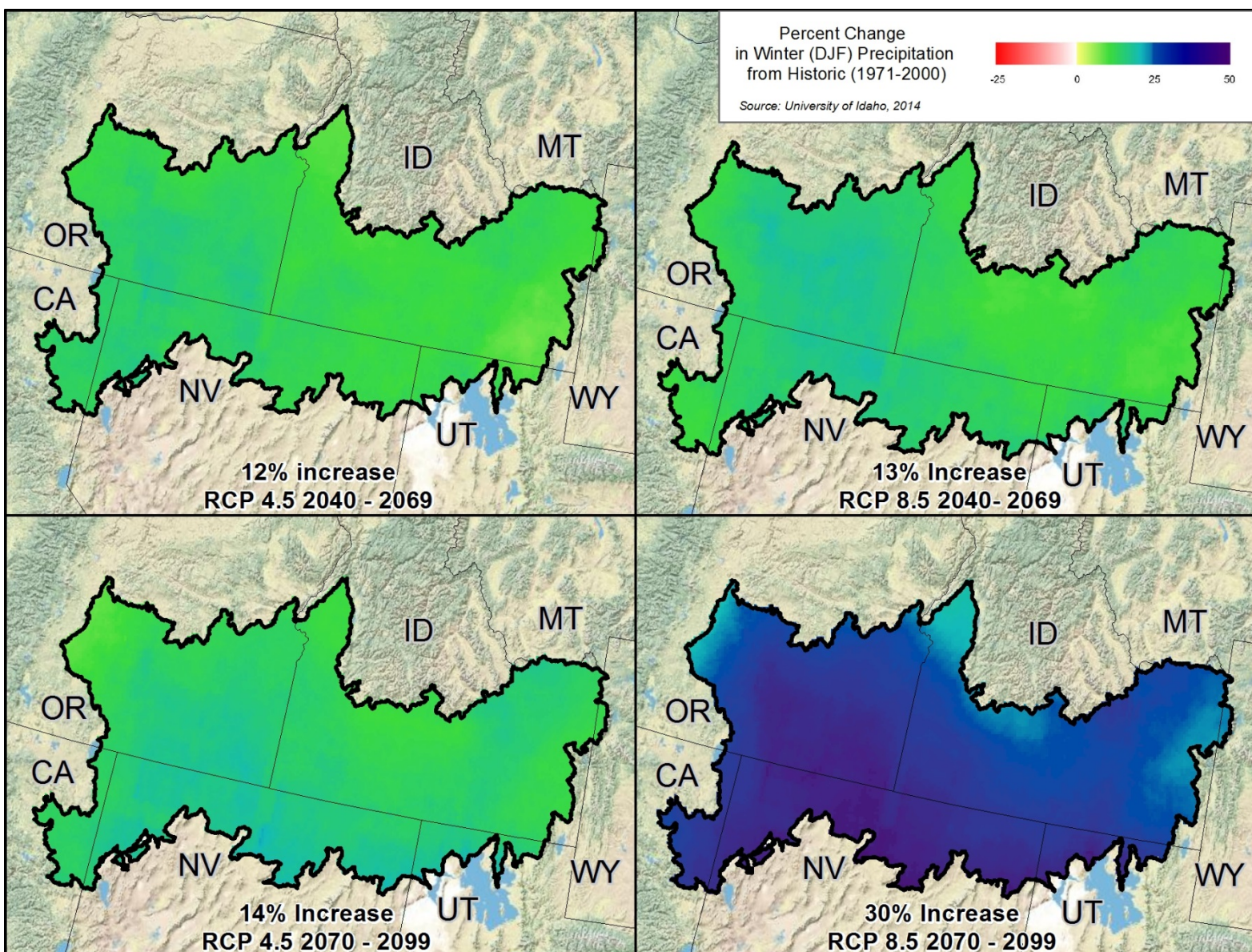


Figure A-8. Predicted Winter Change in Precipitation







# Data Request Method

Rapid Ecoregional Assessments (REAs)—National Operations Center, CO

Individual REA data layers and some other products are still available but are no longer being published.

If you would like to obtain more information, including data and model zip files\* (containing Esri ModelBuilder files for ArcGIS 10.x and relevant Python scripts), please email [BLM\\_OC\\_REA\\_Data\\_Portal\\_Feedback\\_Team@blm.gov](mailto:BLM_OC_REA_Data_Portal_Feedback_Team@blm.gov).

\*Note that a few models require software that BLM does not provide such as R, Maxent, and TauDEM.

Models associated with individual REAs may require data links to be updated to function properly. REA reports, technical appendices, and model overviews (for some REAs) contain detailed information to determine what products are available and what datasets are necessary to run a certain model.

Please include the report name and any specific data information that you can provide with your request.

Other BLM data can be found on the [Geospatial Business Platform Hub](https://gbp-blm-egis.hub.arcgis.com) (<https://gbp-blm-egis.hub.arcgis.com>).